

The Logger's Edge

Paperwork Made Easy



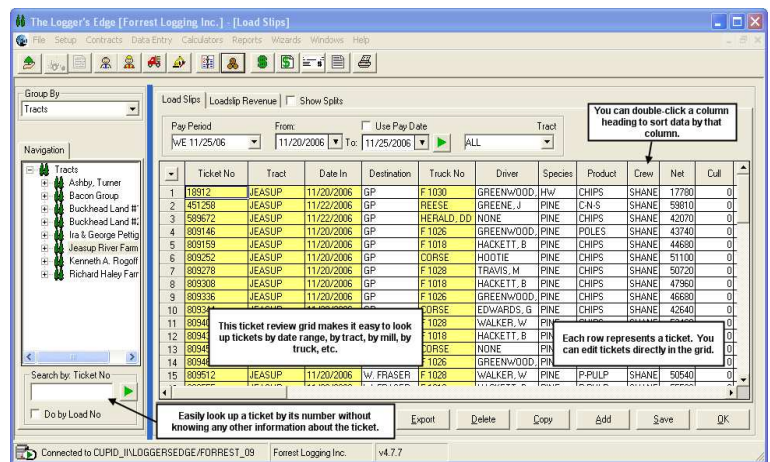
Take the Headache Out of Tracking Load Tickets and Managing a Logging Business with **The Logger's Edge**

Caribou's Logger's Edge software is an easy to use, Windows-based, application that gives you the tools to run a modern and efficient logging operation. The Logger's Edge allows you to spend more time managing your business and less time managing your paperwork.

Ticket Tracking

- Generate Professional Subcontractor & Landowner Pay Statements
- Track Production by Job, By Destination, By Crew, Etc.
- Reconcile Mill Settlements — Ensure You are Paid for ALL your Loads
- Manage Depletion on Company -Owned Tracts
- Streamline Timber Taxes
- Generate Essential Job Profitability Reports
- Pay by Ton, Cord, MBF, Mile, Ton-Mile, Percent of Load Value

Easy to Use Load Entry and Edit Screen



Imagine if You Could:

- **Save Time:** Enter Data Once, and Have it Appear on All Related Revenue and Cost Statements and Reports — No More Fighting with Spreadsheet Copying & Pasting
- **Be Well-Informed:** Call Up a Profit Report on a Completed Job at the Click of a Button as You Prepare a Bid for a Similar, New Job
- **Be More Professional:** Generate Accurate & Nicely Formatted Statements for Your Landowners, Your Bankers, and Your Loggers

The Result: Professional Statements

Hannah Timber Company		
Payee: Wilson Brothers Box 2312 Caribou, Maine 04736	1548 County Road 31 Caribou, ME 04739	Statement No: 114 Pay Period: WE 9/24/2009 Start Date: 9/18/2009 End Date: 9/30/2009
Payment Description	Pay Basis	Payment Amount
Pay By Loadslips		
Hauling		
CPT - EA09068	(Load Count: 18) 532.650 TON	3,208.72
CPT - EA09068	(Load Count: 42) 42.000 LOAD	5,040.00
CPT-EA09069	(Load Count: 16) 450.010 TON	2,712.64
CPT-EA09069	(Load Count: 45) 45.000 LOAD	5,360.00
	Hauling Total: (Load Count: 121)	\$16,321.36
Logging		
CPT - EA09068	(Load Count: 60) 1,803.050 TON	19,833.55
CPT-EA09069	(Load Count: 61) 1,708.920 TON	18,798.12
	Logging Total: (Load Count: 121)	\$38,631.67
	Pay By Loadslips Total:	\$54,953.03
	Statement Sub Total:	\$54,953.03
	Statement Total:	\$54,953.03

Why Is The Logger's Edge A Smart Investment? Let Our Users Tell You . . .

"I continue to be impressed with the ease with which I can generate reports and check production. I am really making decisions based on much more accurate information than I have ever had before . . . I feel more confident in making decisions based on facts rather than hunches."

"Using the Mill Settlement Reconciliation Feature, we have caught enough incorrect payments by mills to more than pay for the software."

"I love the system! It's so much easier than our old system and the Georgia Timber Tax module is a huge time saver."

"My business is more professional with the reports and invoices that I generate with The Logger's Edge."

"I really like the way Logger's Edge can be customized to our needs. It is also very user friendly and forgiving."

"We were able to add on additional production in the woods without having to hire additional people in the office."

"Caribou's support is stellar!"

"It takes me about half the time to do my weekly paperwork now that I have The Logger's Edge!"

"I shared one of the reports with our procurement manager. He was so impressed that our crew is now requested to do more of the company-managed tracts than any other contractor."

Call us now at (850)-532-6206 to schedule a free, one-on-one online demonstration to see if our product is right for you!

At Caribou Software . . .

- Our product is developed and supported by people who know the forest industry.
- Our product is used by some of the largest contractors and timber dealers across North America.
- Our philosophy is like Burger King's—we do our best to let you have it your way! Our system is configurable to your terminology and we can customize reports to let you see your data organized the way you want it!
- Our goal is to make every customer a reference site, so you can be assured that we'll do our best to provide the best product and service in the industry, bar none!

